



Gene M. Ransom, III
Chief Executive Officer
MedChi, The Maryland
State Medical Society

April 30, 2023

MEDCHI SPRING HOUSE OF DELEGATES 2023

MedChi
The Maryland State Medical Society

AGENDA

- Operations Updates
- Follow Up on Resolutions
- MedChi Physician Services
- Building Update



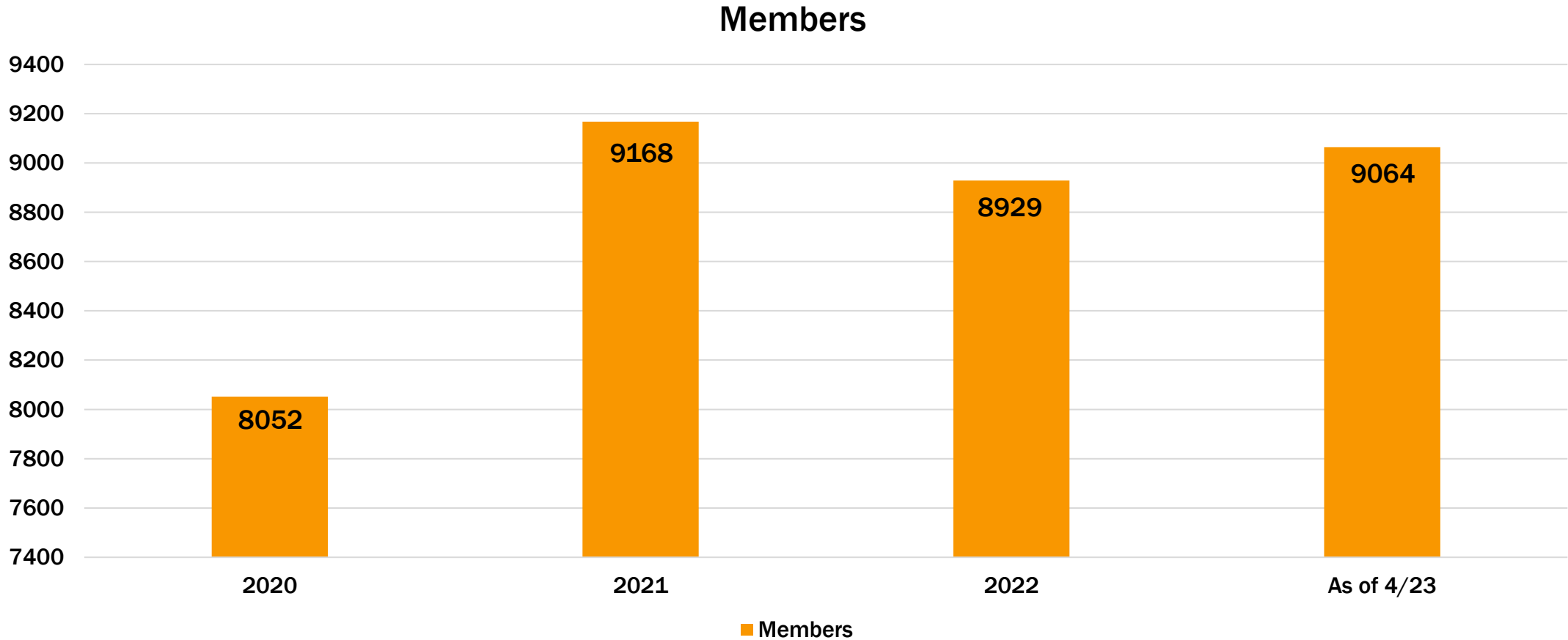


OPERATIONAL UPDATES

Membership

Finance

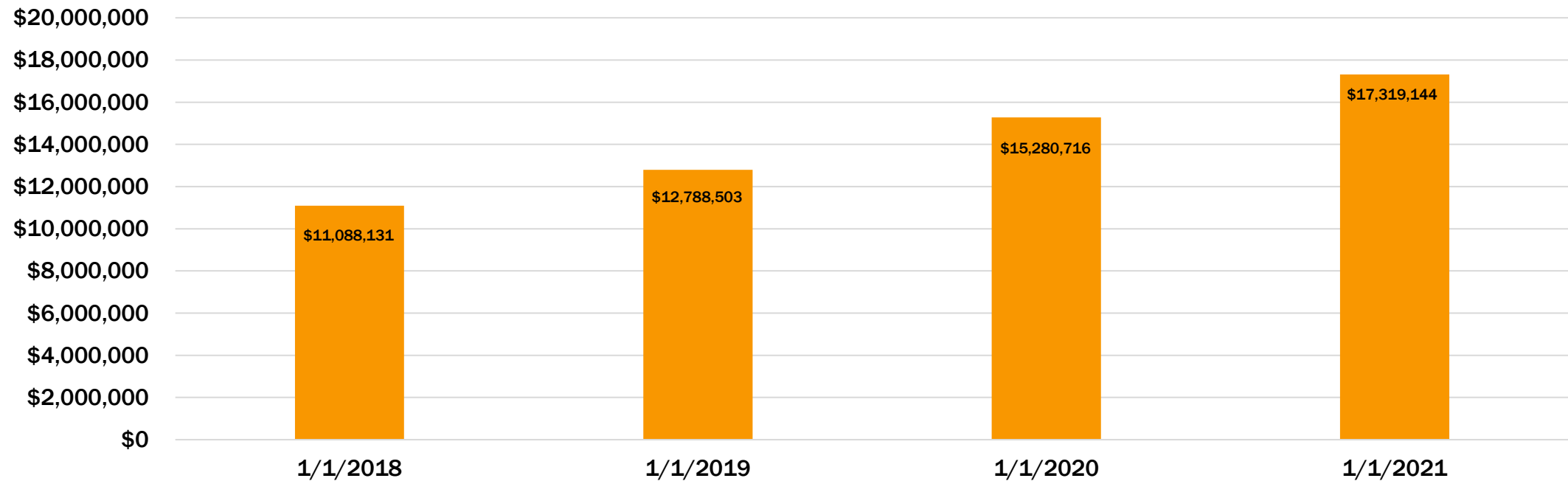
MEMBERSHIP



FINANCE



Audited MedChi Net Worth by Year



FOLLOW UP ON RESOLUTIONS



**Follow up to Resolutions from 2023 Fall House of
Delegates Meeting**

FOLLOW UP TO RESOLUTIONS FROM 2023 FALL HOUSE OF DELEGATES MEETING



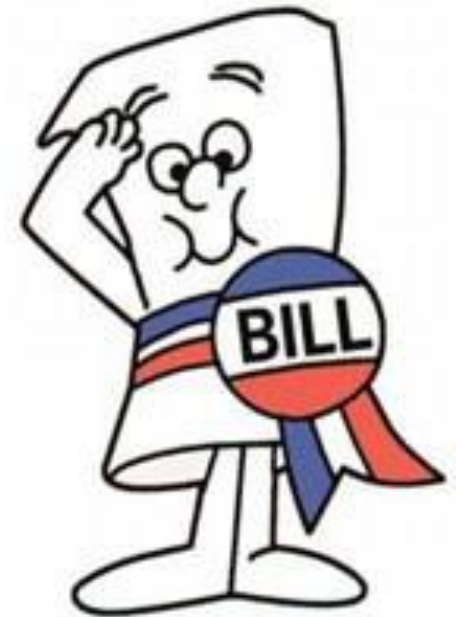
Step Therapy
Success!



Breast Cancer
Success!



Prior Auth
More Work to do

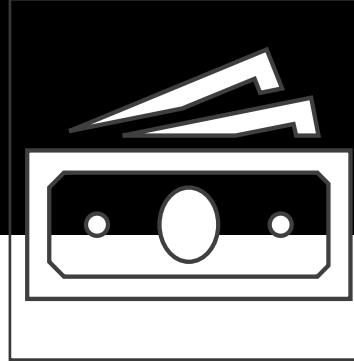


MEDCHI PHYSICIAN SERVICES

- **Center for Employed Physician**
- **Center for Value Based Care**
 - **CTO Update**
- **Center for Private Practice**

CENTER FOR EMPLOYED PHYSICIAN

The Center for the Employed Physician was established by the Center for a Healthy Maryland through a grant from The Physicians Foundation. Through this project resources and educational programming were developed to assist physicians who are currently employed or are considering entering into an employment arrangement. To inform the content of the tools and services to be created, 442 Maryland physicians responded to a survey, giving feedback about their concerns regarding practicing medicine in an employed setting. Physicians considering employment most requested a resource that would aid in contract negotiations, while physicians who are currently practicing in employed settings most requested current compensation models. Both groups were also concerned about maintaining autonomy.



Salary Survey

Released this year and IDEA Task force will be working on findings regarding gender disparity

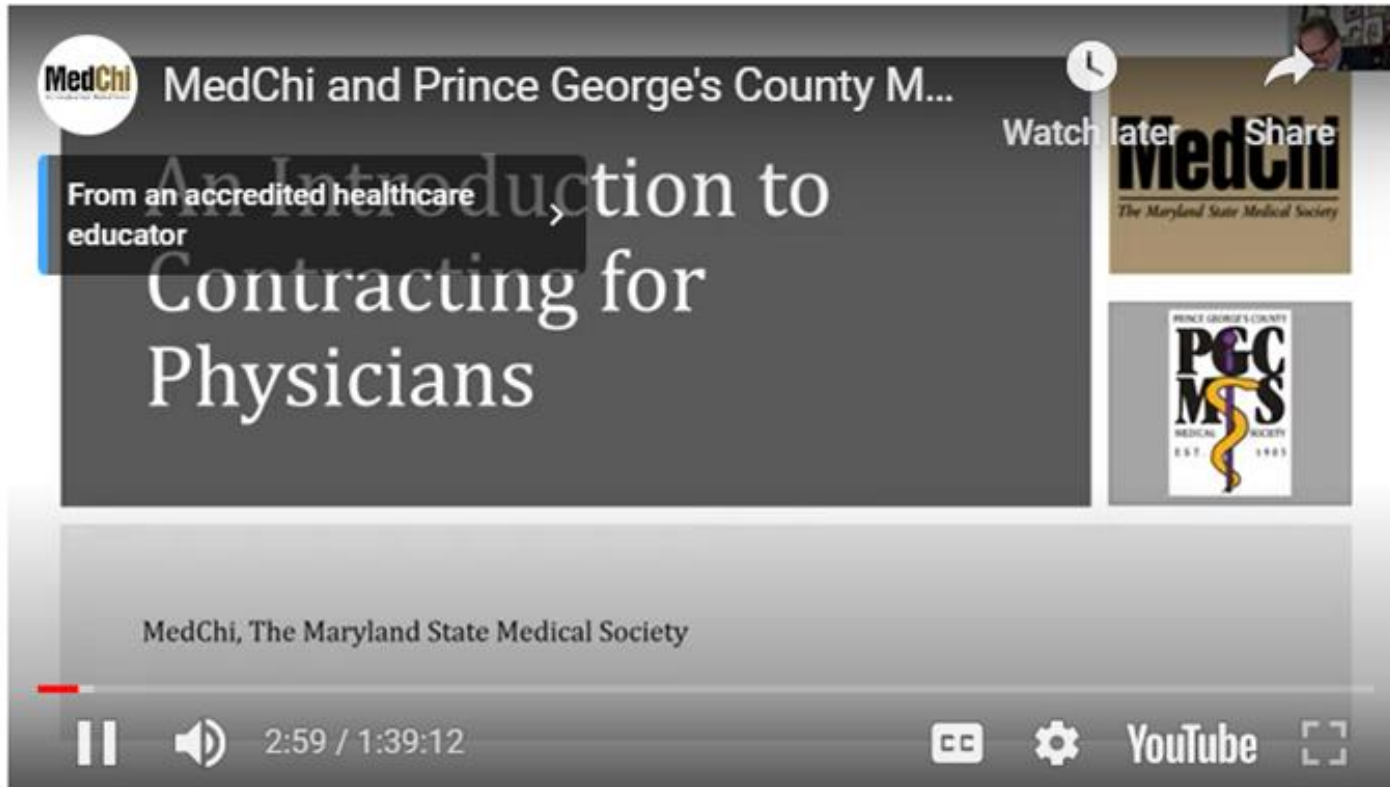
Model Contract



Contract Seminars

- Dr. Williams and the Medical Economics Council is doing a series on contract negotiations

PHYSICIAN EMPLOYMENT EDUCATION EVENTS



Next Presentation:

**Baltimore County Medical
Association
Virtual CME on Physician Contract
Negotiation**

**May 31, 2023
7:00 pm, via ZOOM**

CENTER FOR THE PRIVATE PRACTICE OF MEDICINE

MedChi is committed to helping practices remain independent. As your Medical Society, MedChi developed the Center for the Private Practice of Medicine to provide business support tailored to the time constraints of your practice. Our goal is to strengthen your practice by providing credible support that meets your needs with key business services and resources, such as:

- HIPPA & Records
- MedChi CTO
- Practice Management Help
- Ancillary Suggestions Insurance Needs
- Technology Help



MedChi is committed to helping practices remain independent. As your Medical Society, MedChi developed the **Center for the Private Practice of Medicine** to provide business support tailored to the time constraints of your practice. Please take a moment to review some of the key business services we provide to strengthen your practice. Our goal is to help your practice by providing credible support that meets your needs.

CENTER FOR VALUE-BASED CARE

MedChi leads the charge in protecting physician interests as Maryland healthcare shifts to value-based care. In the 2022 General Assembly Session, MedChi worked to make sure the CareFirst value-based bill included physician and patient protections. MedChi was a strong supporter of the Maryland Primary Care Program, the largest per capita, most successful value-based care program for Maryland adult primary care.

- EQIP
- Care Transformation
- Maryland Insurance Issues on Value-Based Care
- MDPCP
- Total Cost of Care



MDPCP/ MEDCHI CTO UPDATE

It is time to recruit for MDPCP/MedChi CTO for 2024.

Please let us know if you know of any primary care practices who may be interested.

Timeline: The MDPCP will have an annual enrollment period each spring/summer during which interested practices and CTOs can apply.

We also have transformation grants available for training and help – reach out to MedChi today!

Payment Type	Amount & Frequency	Purpose
Care Management Fees (CMF)	Payments range from \$6 to \$100 pbpm, paid upfront quarterly	Paid based on the risk levels of the Medicare beneficiaries attributed to that practice.
Performance Based Incentive Payments (PBIP)	\$2.50 to \$4.00 pbpm, paid upfront annually	Balanced against measures of quality, patient satisfaction and utilization

EQIP- UPDATE

THE EPISODE QUALITY IMPROVEMENT PROGRAM

EQIP is an episode-based payment program for non-hospital providers designed to:

- Help the State meet the financial targets of Total Cost of Care (TCOC) Model
- Include more providers in a value-based payment framework (that is, to have responsibility and share in rewards for reducing Medicare TCOC spending)
- Encourage multi-payer alignment in a value-based payment framework
- Include more episodes than in Centers for Medicare & Medicaid Services (CMS) Innovation Center (CMMI) models
- Broaden access to Medicare's Advanced APM (AAPM) MACRA opportunity

EQIP will provide the State with input on:

EQIP sign up period is over. Great results! We have physicians in all 4 new specialties and over 10,000 physicians / Care Partners submitted for CMS vetting*

- Representation from 43 specialties
- 62 EQIP Entities
- Participation in all 45 available EQIP Entities

- Currently in EQIP, we are working to add bundles that related to Rheumatology, MSK, and Nephrology



BUILDING UPDATE

The General Assembly awarded
\$630,000 for capital
improvements to MedChi for
the MedChi building museum
project!



NOTEWORTHY INFORMATION

- Cancer prevention GI Grant
- MedChi's 225 Anniversary
- MedCast
- MedChi Summer Social
- First Aid Room
- Councils and Committees

GI GRANT

MedChi Awarded New Grant

ASGE - CRC Program and Deliverables

MedChi signed a new grant to do advocacy and education around colonoscopy and CRC screening and awareness.

The grant is for one year and is extendable for an additional two years.



Grant Request

ASGE CRC Screening Program to Improve Follow-through for Follow Up Colonoscopy after a Positive Stool-Based Test

Introduction

The American Society for Gastrointestinal Endoscopy (ASGE) is the global leader in advancing digestive care through education, advocacy and promotion of excellence and innovation in endoscopy. Since its founding in 1941, ASGE has been dedicated to advancing patient care and digestive health by promoting excellence in gastrointestinal endoscopy. With over 15,000 members worldwide, the society serves the medical profession and the public by providing education and information. Furthermore, ASGE develops and advocates responsible positions for the benefit of patients, the public and medical professionals.

Background

Colorectal cancer (CRC) is the second leading cause of cancer related death in the United States. Incidence and mortality rates for colorectal cancer vary by age, race/ethnicity, geography, and socioeconomic status. While overall colorectal cancer screening rates have increased over the last decade, screening rates and follow up rates after a positive stool-based test among underserved populations are still unacceptably low.

Problem Statement

For those underserved populations (uninsured and underinsured) that screen using a stool-based test, the lack of follow-up after a positive screen varies with adherence ranging between 50% to 70%.ⁱ Importantly, adherence is often delayed due to lack of knowledge by patients and providers and other multi-level barriers. The barriers to follow-up are diverse and complex based on the population, locality, and community collaborations. The lack of adherence includes clinical and non-clinical barriers experienced at multiple levels including the health system, referring provider, patient, and policy level.ⁱⁱ

Subsequently, successful screening programs will require a systematic approach that includes collaboration between health systems, referring providers, community programs, and federal/state policymakers.

Program Aim

To develop a financially sustainable and replicable model to solve for the issue of timely follow up of colonoscopy following a positive stool-based test in vulnerable populations with best practices that can be broadly expanded across all populations and regions.

MEDCHI'S 225TH ANNIVERSARY

PLANNING FOR MEDCHI'S 225TH ANNIVERSARY
CELEBRATION IS UNDERWAY.

KICK OFF FUNDRAISING EVENT IN NOVEMBER
2023

LEGISLATIVE EVENT IN JANUARY 2024

MUSEUM GRAND OPENING EVENT IN JULY 2024

THANKS TO OUR PHYSICIAN VOLUNTEERS: ALLEN
JENSEN, MD, LORALIE MA, MD, AND PADMINI
RANASINGHE, MD.

MORE MEMBERS ARE NEEDED TO PARTICIPATE IN
THE PLANNING EFFORTS.



MEDCHI'S MEDCAST

MedCast is a new podcast created by and for MedChi. The digital program was created with the vision to provide an outlet for MedChi physicians to come together to discuss a variety of topics on health care, with host Dr. Stephen Rockower, while also featuring episodes that allow them to get to know their peers.

An insider's view
on the issues
on medicine
on healthcare
MedCast



Season 2, Coming SOON!



MEDCHI'S SUMMER SOCIAL

O's vs Nationals
Mark your calendars!

Wednesday, 9/27 @6:35 pm

Join us!





FIRST AID ROOM

Thank You to ALL Who Help
Out in the First Aid Room





**WE NEED
YOU!**



BYLAWS COUNCIL

Bylaws, Rules & Regulations Committee

COMMUNICATIONS COUNCIL

LEGISLATIVE COUNCIL

Boards & Commissions Committee
Health Insurance Committee
Public Health Committee

MEDICAL ECONOMICS COUNCIL

Payer Relations Committee
Private Practice of Medicine Subcommittee

MEDICAL POLICY COUNCIL

Addictions Committee
Cannabis Committee
Ethics and Judicial Affairs Committee
Opioid Committee
Public Health Committee

OPERATIONS COUNCIL

CME Review Committee (CMERC)
Committee on Scientific Activities (COSA)
Finance Committee

Join Today!

TASK FORCES

Global Budgeting Task Force
IDEA (Inclusion, Diversity, Advocacy,
Empower) Task Force
Childhood Behavioral Health Task Force

SUBSIDIARIES & AFFILIATES

MMPAC
MedChi Agency
Alliance

CENTER FOR A HEALTHY MARYLAND

Development Committee
Finance Committee
Grants & Education Committee
History of Medicine Committee
Physician Health Committee
Physician Health Oversight Committee

SECTIONS

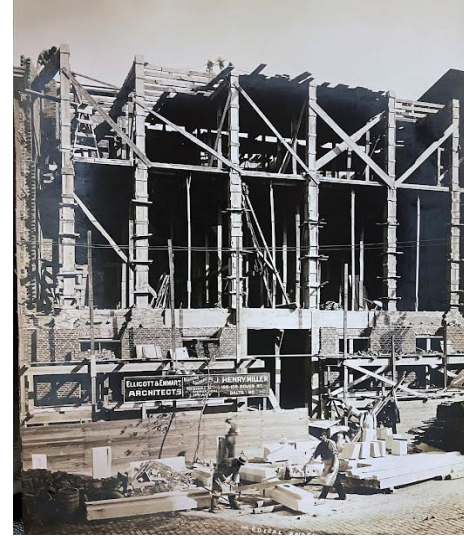
Medical Students
Residents & Fellows
Early Career Physicians
IM

ANY QUESTIONS?

Please visit us on
the web, at
Medchi.org

Follow us on
Facebook
[@MedChiupdates](https://www.facebook.com/MedChiupdates)

MedChi, The
Maryland State
Medical Society





THANK YOU

Gene M. Ransom

gransom@medchi.org